

OFFICE OF THE MAYOR

ONE CITY SQUARE, SUITE 215
WARREN, MI 48093-6726
(586) 574-4520
www.cityofwarren.org

INTRODUCING ALL ACCESS WARREN

A CITY OF WARREN INITIATIVE

Dear Warren Business Owner:

ALL ACCESS WARREN is an important new initiative launched by the City of Warren and its Disability Commission to promote awareness about the benefits of accessibility for persons with disabilities.

The goal of ALL ACCESS WARREN is to collaborate with Warren-based businesses, non-profit organizations, and other establishments in Warren that share a common goal: ensuring that persons with disabilities have equal access when working, visiting, or frequenting businesses in our city.

Did you know that, according to the US Census Bureau, one in five adults has a disability? This is why the City of Warren and the Disability Commission want to recognize businesses for being accessible. There is also an added benefit: **ensuring accessibility for all translates into more business for you and our city.**

The major component of ALL ACCESS WARREN involves conducting accessibility surveys throughout the city. These surveys will be done by trained Warren high school students, Warren residents, persons with disabilities, and other volunteers.

The free surveys take just minutes to conduct and look at three primary factors including parking, entrance access, and ability to maneuver upon entering the establishment. The surveys are only assessing areas within businesses that would be open to patrons, not areas off limits to customers.

Surveys typically take less than 10 minutes. Upon completion of the survey, if found to be at least 75% accessible, each surveyed business will receive a decal which can be placed inside the business or in the window.

Additionally, we will list the business by category of business, **post a link to the business's** website on the Disability Commission's ALL ACCESS WARREN web page, and recognize the businesses in the city's magazine that is mailed citywide quarterly.

That means **free advertising** for your business!

Again, this is a voluntary campaign meant to recognize businesses for being accessible. **NO ESTABLISHMENT SURVEYED WILL BE FINED, TICKETED, OR CITED IN ANY WAY BY THE CITY OF WARREN IF IT DOES NOT MEET THE VOLUNTARY ACCESSIBILITY ASSESSMENT GOALS. THE RECOMMENDED CHANGES ARE NOT MANDATORY. THERE IS NO PENALTY FOR NOT AGREEING TO BE SURVEYED OR FOR NOT IMPLEMENTING THE RECOMMENDATIONS.**

The City of Warren and the Disability Commission are eager to recognize accessible businesses, and we hope that you will share our enthusiasm for this important campaign. Getting involved is simple.

There are three ways to complete the survey:

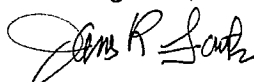
- 1) **Self-Survey:** Download the assessment form (with instructions) that can be mailed back to us. Go to **warrendisabilitycommission.com** and download the survey instruction and the actual survey. Complete the survey and mail it to Warren Disability Commission. The mailing address is:

Commission on Disabilities
Warren City Hall
One City Square
Warren, MI 48093

- 2) **Online Assessment and Submission:** Complete and submit an online self-assessment available at **warrendisabilitycommission.com**. All self-assessments will require an actual confirmation visit at which time the business will receive a recognition letter and the ALL ACCESS WARREN window decal.
- 3) **Schedule an Assessment:** Business surveys can be requested and scheduled at your convenience! Just call (586) 353-0575 and leave us a message requesting a survey visit. We will call you to complete the scheduling of your assessment.

For more information, visit **warrendisabilitycommission.com** or call **(586) 353-0575**. The City of Warren and the Disability Commission want to thank you for your support in making our community more inclusive for all. Let's work together to keep this city thriving!

Regards,



James R. Fouts, Mayor
City of Warren

Accessibility Questions: Four Important Priorities

Reviewer: _____

Date: _____

Establishment: _____

Address: _____

Establishment Contact: _____

Y	N	N/A	A. Parking and Approach
			1. Is accessible parking marked by the international symbol? <i>(Note: Signage not necessary if 4 or less parking spots)</i>
			2. Is the route from parking to the business reasonably stable, flat and slip resistant?



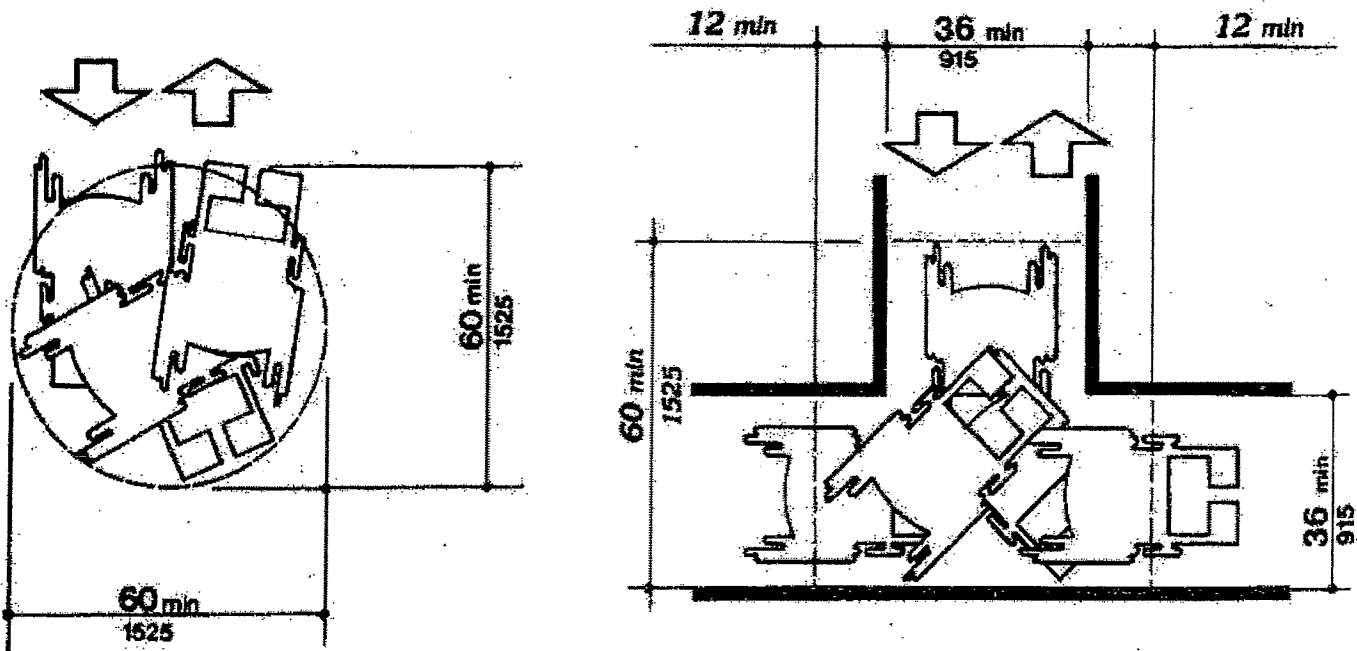
Y	N	N/A	B. Entrance
			3. Is there an entrance that does not require stairs?
			4. Can a standard 30" wheelchair get through the doorway (at least 32" wide)?
			5. Is the door threshold less than 3/4 of an inch, about the size of an adult thumbnail?

Y	N	N/A	C. Circulation and/or Seating
			6. Are there places where people in wheelchairs can comfortably sit with their legs under the table; and are these tables equally dispersed throughout the establishment?
			7. Are aisles about 32", to checkouts, route to seating or path to restroom?
			8. Is a portion of sales counter comfortable for a seated person to do business, like to write a check or sign a receipt? <i>(Note: staff handing a person a solid object, like a clipboard to write on is usually an acceptable alternative).</i>
			9. Can individuals maneuver in departments off "main aisles" between racks and displays? <i>(See diagram on back of page)</i>
			10. Is merchandise kept out of clear space and not filled with display racks, garbage cans or other barriers?

Y	N	N/A	D. Restrooms
			11. Are the restrooms marked by the international accessibility symbol?
			12. Is a larger stall provided with at least 32" door width and two handrails?



Maneuvering in Aisles / Turning Diameters:



Reviewer's Comments:

**Please indicate if business is deemed accessible based on rating scale below:	Yes	No
**If yes, was Recognition Package provided?	Yes	No
If no, be sure comments indicate areas of concern and if any simple fixes could change accessibility rating		

Rating Scale (75% positive score):

If Asked.....	Minimum "Yes" Responses needed to receive Recognition
12 questions	9 "Yes" responses
11 questions	9 "Yes" responses
10 questions	8 "Yes" responses
9 questions	7 "Yes" responses
8 questions	6 "Yes" responses

*NOTE- Items that are marked "N/A" are not used in calculating establishment's final score!

**For additional information about AAW refer to 586.353.0575 or www.warrendisabilitycommission.com